

**ROWLSON  
INDUSTRIAL SEWING**

**Engineers Limited**



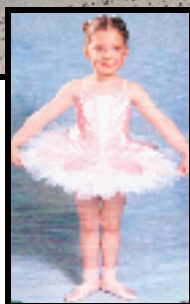
Westbury Road, Nottingham NG5 1EJ  
United Kingdom

Tel: +44 (0)115 979 1000

Fax: +44 (0)115 979 1444

Email: [mark.rowlson@rowlson.com](mailto:mark.rowlson@rowlson.com)

Web: [www.rowlson.com](http://www.rowlson.com)



## **MULTIPLEAT DB2-B746-5 pleating machine for tutus**

### **Description**

A single needle lockstitch multi-cam pleating machine with large capacity bobbin

### **Application**

For pleating net at an adjustable ratio of between 0~7 to 1.

### **Features**

Supplied with three cams; #2 box pleat, #3 Elizabethan pleat, #6 double step box pleat. Cams are interchangeable within 30 seconds.